



Andy Beshear  
GOVERNOR

## TRANSPORTATION CABINET

200 Mero Street  
Frankfort, Kentucky 40601

Jim Gray  
SECRETARY

August 8, 2025

CALL NO. 311  
CONTRACT ID NO. 252175  
ADDENDUM # 1

Subject: Taylor County, FD05 109 0070 000-004  
Letting August 21, 2025

- (1) Revised - Note - Page 12 of 62
- (2) Added - Special Note - Pages 42A-42I of 62
- (3) Revised - Summary Sheet - Page 44 of 62
- (4) Added - Summary Sheet - Page 44A of 62
- (5) Revised - Typical Sections - Pages 47-48 of 62
- (6) Revised - Proposal Bid Items - Page 62 of 62

Proposal revisions are available at <http://transportation.ky.gov/Construction-Procurement/>.

If you have any questions, please contact us at 502-564-3500.

Sincerely,

A handwritten signature in black ink that reads "Rachel Mills".

Rachel Mills, P.E.  
Director  
Division of Construction Procurement

RM:mr  
Enclosures

### **SURFACING AREAS**

The Department estimates the mainline surfacing width to be varied 20 to 27 feet.

The Department estimates the total mainline area to be surfaced to be 51,806 square yards.

The Department estimates the shoulder width to be 1.5 feet on each side.

The Department estimates the total shoulder area to be surfaced to be 6,512 square yards.

### **ASPHALT MIXTURE**

Unless otherwise noted, the Department estimates the rate of application for all asphalt mixtures to be 110 lbs/sy per inch of depth.

### **INCIDENTAL SURFACING**

The Department has included in the quantities of asphalt mixtures established in the proposal estimated quantities required for resurfacing or surfacing mailbox turnouts, farm field entrances, residential and commercial entrances, curve widening, ramp gores and tapers, and road and street approaches, as applicable. Pave these areas to the limits as shown on Standard Drawing RPM-110-06 or as directed by the Engineer. In the event signal detectors are present in the intersecting streets or roads, pave the crossroads to the right of way limit or back of the signal detector, whichever is the farthest back of the mainline. Surface or resurface these areas as directed by the Engineer. The Department will not measure placing and compacting for separate payment but shall be incidental to the Contract unit price for the asphalt mixtures.

### **FUEL AND ASPHALT PAY ADJUSTMENT**

The Department has included the Contract items Asphalt Adjustment and Fuel Adjustment for possible future payments at an established Contract unit price of \$1.00. The Department will calculate actual adjustment quantities after work is completed. If existing Contract amount is insufficient to pay all items on the contract with the adjustments, the Department will establish additional monies with a change order.

### **OPTION B**

Be advised that the Department will control and accept compaction of asphalt mixtures furnished on this project under OPTION B in accordance with Sections 402 and 403.

## **SPECIAL NOTE FOR TRAFFIC SIGNAL LOOP DETECTORS**

**1.0 DESCRIPTION.** Be advised that there are existing traffic signal loop detectors within the construction limits of this project. Except as specified herein, perform traffic signal loop replacement in accordance with the Department's Standard/Supplemental Specifications, Special Provisions, Special Notes, and Standard/Septia Drawings, current editions and as directed by the Engineer. Article references are to the Standard Specifications. Furnish all materials, labor, equipment, and incidentals for replacement of traffic signal loop installation(s) and all other work specified as part of this contract.

**1.1 Pre-bid Requirements.** Conform to Subsection 723.03.17

**2.0 MATERIALS.** Except as specified herein, furnish materials in accordance with Subsection 732.02 and Section 835. Provide for materials to be sampled and tested in accordance with the Department's Sampling Manual. Make materials available for sampling a sufficient time in advance of the use of the materials to allow for the necessary time for testing, unless otherwise specified in this Special Note.

**2.1 Maintain and Control Traffic.** See Traffic Control Plan.

**2.2 Sand.** Furnish natural sand meeting the requirements of Subsection 804.04.01.

**2.3 Seeding.** Furnish Seed Mix Type I.

**2.4 Loop Saw Slot and Fill.** Furnish loop sealant, backer rod, and non-shrink grout according to the Saw Slot Detail.

**2.5 Junction Boxes.** Furnish junction box type B, #57 aggregate, and geotextile filter type IV according to junction box detail.

**2.6 Cable No. 14/1 Pair (Lead-in).** Furnish cable that is specified in Section 835. Cable shall be ran splice free. This shall include splice kits to connect to the loop wire.

**2.7 Conduit.** Furnish and install appropriate conduit from transitions to the roadway, junction boxes and poles. See details below.

**3.0 CONSTRUCTION.** Except as specified herein, install and test Traffic Signal Loop Detectors in accordance with Section 723 and the drawings.

**3.1 Testing.** Conform to Subsection 723.03.17 (A)

**3.2 Coordination.** Conform to Subsection 723.03.17 (B)

**3.3 Connection.** Conform to Subsection 723.03.17 (C)

**3.4 Maintain and Control Traffic.** See Traffic Control Plan.

**3.5 Milling.** Conform to Subsection 723.03.17 (F)

**3.6 Loop Saw Slot and Fill.** Conform to Subsection 723.03.13 (A).

Traffic Signal Loop Detectors  
Page 2 of 9

- 3.7 Backfilling and Disturbed Areas. Conform to Subsection 723.03.11.
- 3.8 Removal. Conform to Subsection 723.03.16.
- 3.9 Property/Roadway Damage. Conform to Subsection 723.03.17 (J).
- 3.10 Right-of-Way Limits. Conform to Subsection 723.03.17 (K).
- 3.11 Utility Clearance. Conform to Subsection 716.03.01.

3.12 Control. Obtain the Engineer’s approval of all designs required to be furnished by the Contractor prior to incorporation into the work. The Department reserves the right to permit other contractors, state forces, public utility companies, and others to do work during the construction within the limits of, or adjacent to, the project. Conduct operations and cooperate with such other parties so that interference with each other’s work will be reduced to a minimum. The Contractor agrees to make no claims against the Department for additional compensation due to delays or other conditions created by the operations of such other parties. Should a difference of opinion arise as to the rights of the Contractor and others working within the limits of, or adjacent to, the project, the Engineer will decide as to the respective rights of the various parties involved in order to ensure the completion of the work in general harmony and in a satisfactory manner, and the Engineer’s decision shall be final and binding upon the Contractor.

- 3.13 Bore and Jack. Conform to Subsection 723.03.06 (I).
- 3.14 Open Cut Roadway. Conform to Subsection 723.03.06 (I).

4.0 MEASUREMENT. See Subsection 723.04 for bid item notes. Additional bid items include the following:

4.1 Loop Test. The Department will measure the quantity as each individual unit loop tested. The Department will not measure disconnection, reconnection, traffic control, re-splicing per specifications, before and after testing per note above, and any associated hardware for payment and will consider them incidental to this item of work.

4.2 Remove Signal Equipment. The department will measure the quantity by each. The department will not measure backfilling and the disposal or transportation of equipment and materials associated with any structural or electrical component of the signal system including, but not limited to pole bases, poles, junction boxes, cabinets, and wood poles for payment and will consider them incidental to this item of work.

5.0 PAYMENT. The Department will make payment for the completed and accepted quantities of listed items according to Subsection 723.05 in addition to the following:

<u>Code</u>	<u>Pay Item</u>	<u>Pay Unit</u>
Conduit 1”	4792	Linear Foot
PVC Conduit – 1 ¼ inch – sch 80	24900EC	Linear Foot

Traffic Signal Loop Detectors  
Page 3 of 9

PVC Conduit – 2 inch – sch 80	24901EC	Linear Foot
Conduit 2”	4795	Linear Foot
Electrical Junction Box type B	4811	Each
Loop Test	24963ED	Each
Trenching and Backfilling	4820	Linear Foot
Loop Wire	4830	Linear Foot
Cable-No. 14/1 Pair	4850	Linear Foot <sup>1</sup>
Loop Saw Slot and Fill	4895	Linear Foot <sup>1</sup>
Bore and Jack Conduit	21543EN	Linear Foot <sup>3</sup>
Open Cut Roadway	4821	Linear Foot <sup>3</sup>
Remove Signal Equipment	24955ED	each

The Department will consider payment as full compensation for all work required under these notes and the Standard Specifications.

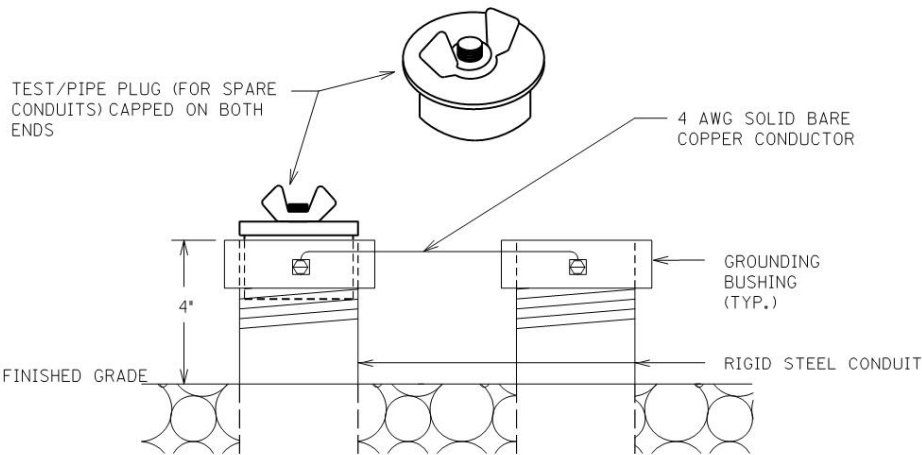
Contrary to section 723:

SUBSECTION:       03.13 Loop Installation.

REVISION:         Replace first sentence note with the following:

twist unshielded loop wire (imsa 51-7) with 3 to 5 turns from the start of homerun to the inside conduit, junction box, cabinet, or pole. Twist unshielded loop wires (imsa 51-7) with 3 to 5 turns per foot from the start of the homerun to the junction box, cabinet, or pole. Slot can be widen to .5" to .625" to help with the installation of the twisted wire.

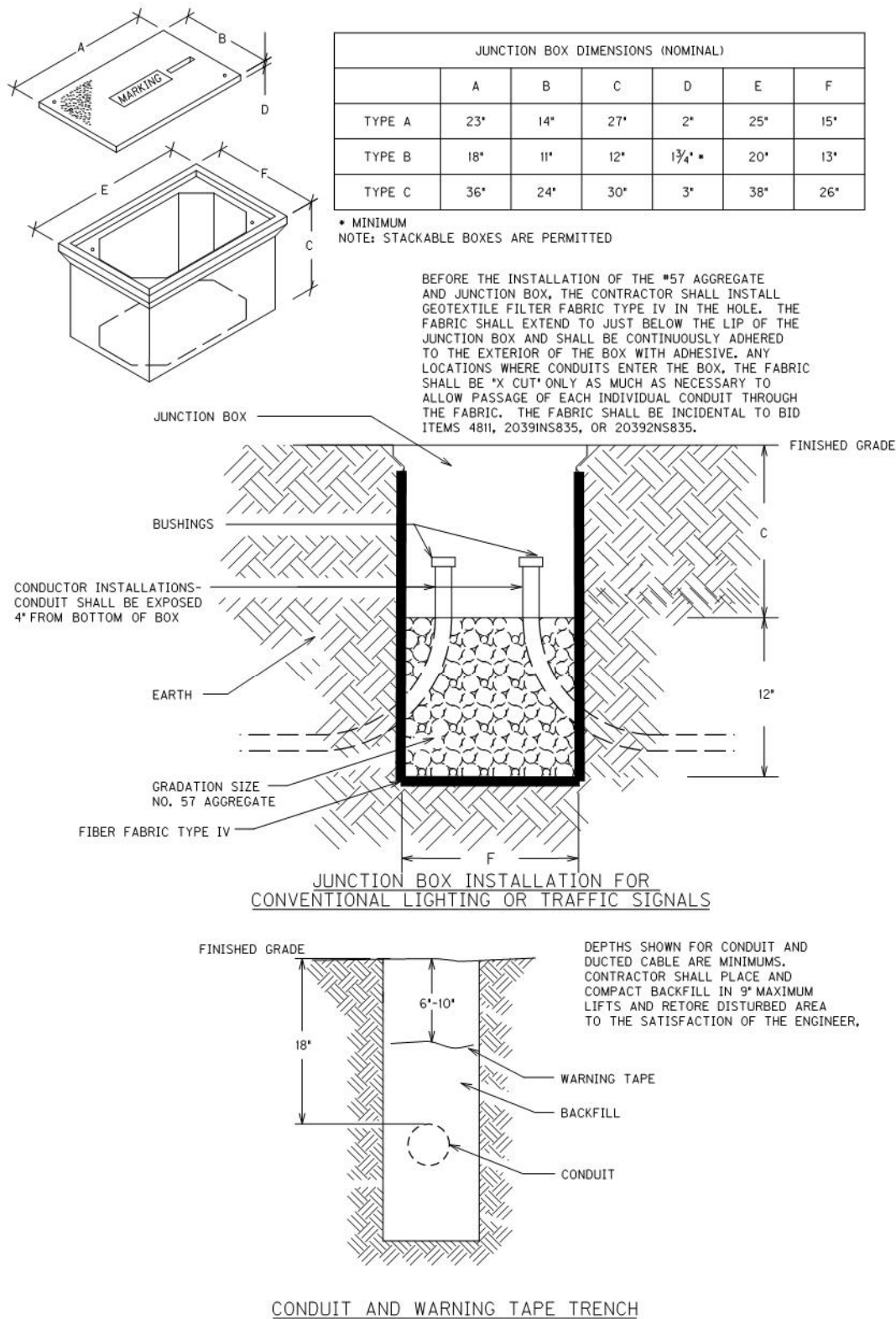
Traffic Signal Loop Detectors  
Page 4 of 9



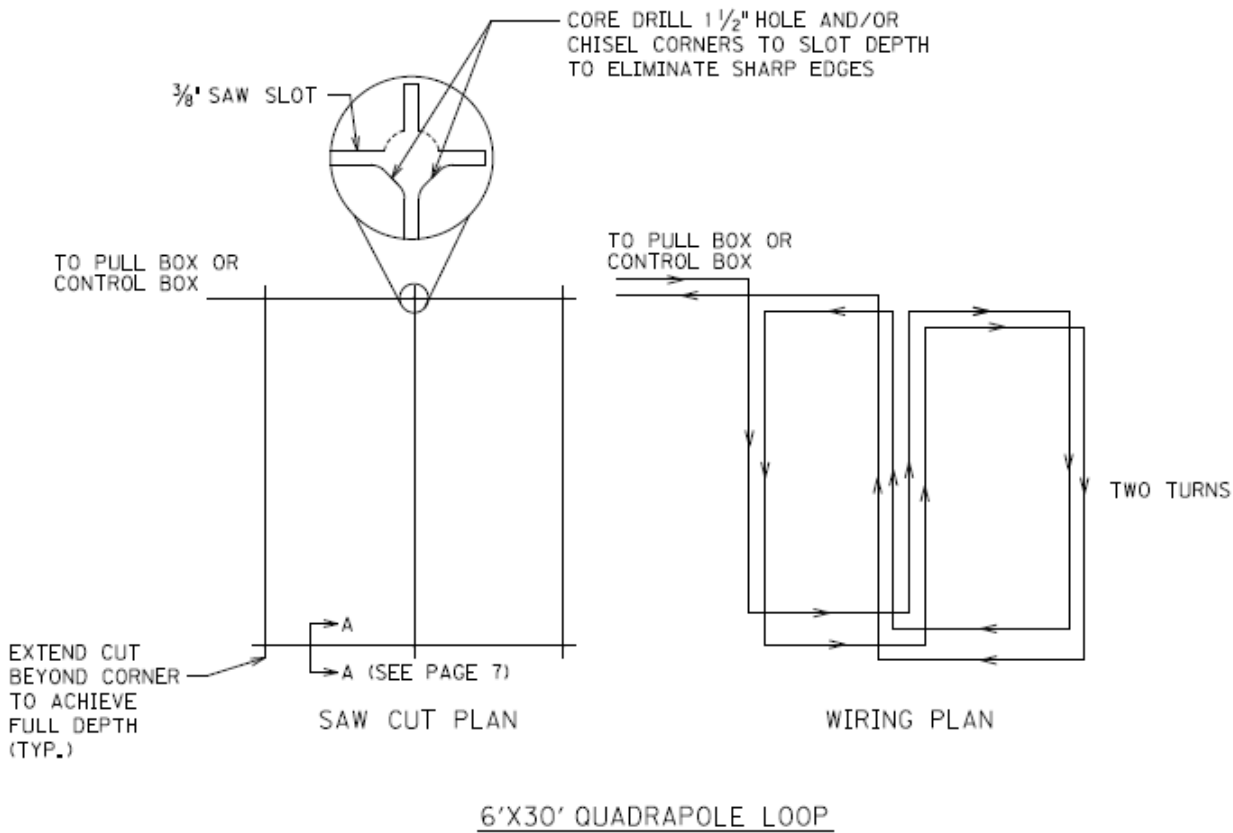
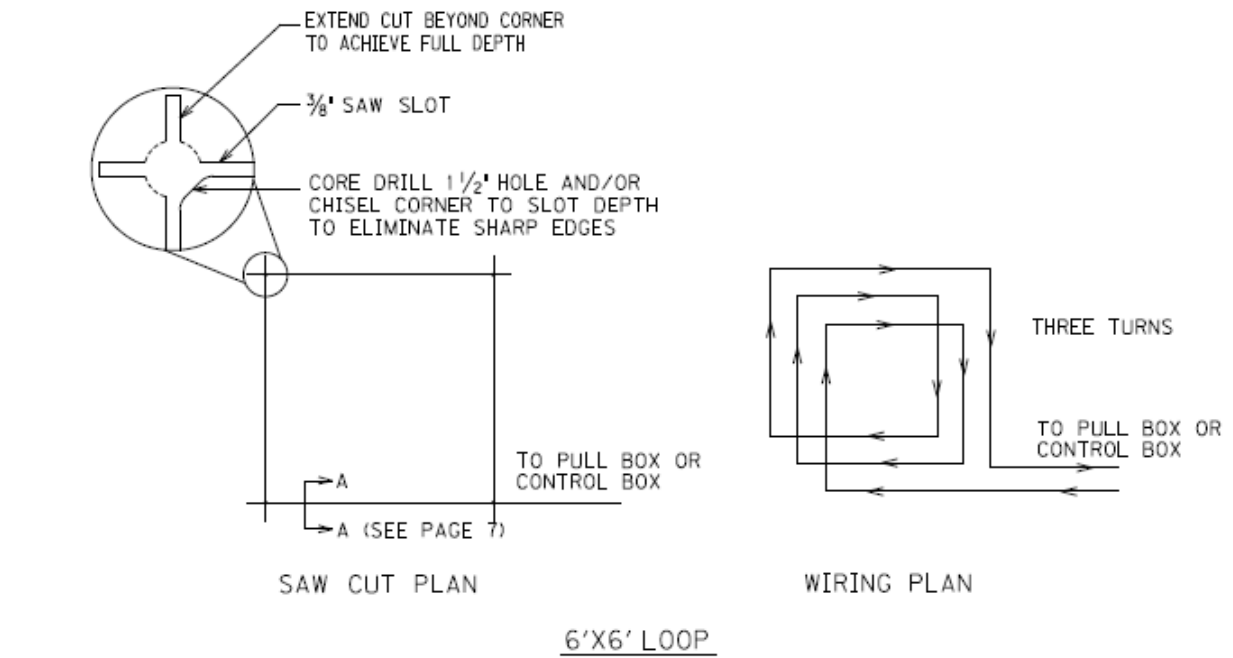
TEST/PIPE PLUG(FOR SPARE CONDUITS) AND GROUNDING DETAIL

Traffic Signal Loop Detectors

Page 5 of 9

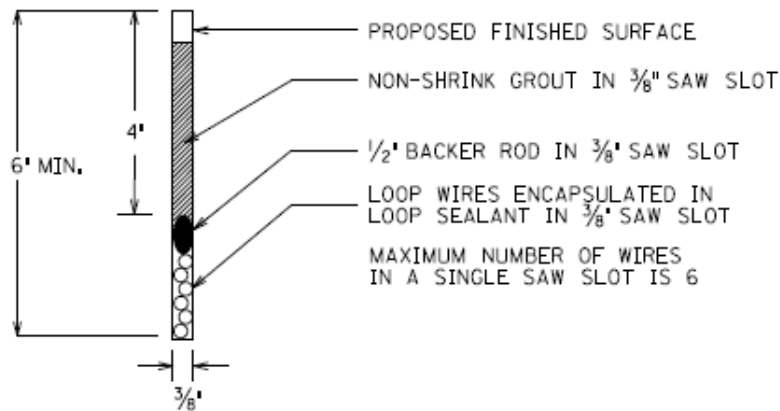


Traffic Signal Loop Detectors  
Page 6 of 9

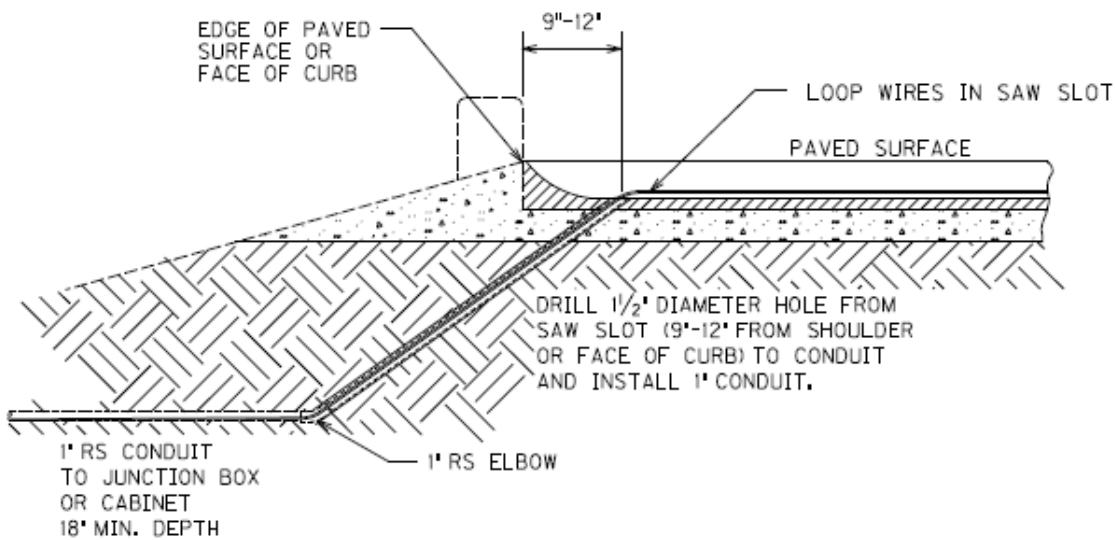




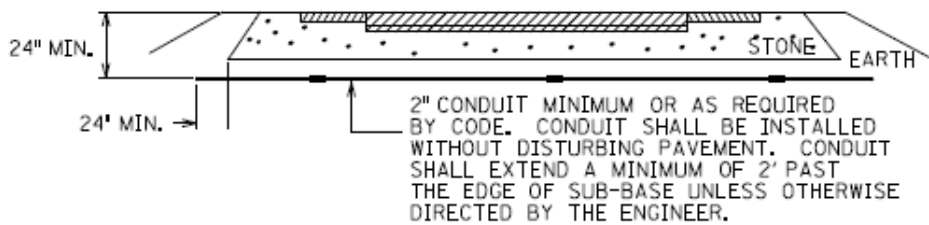
Traffic Signal Loop Detectors  
Page 7 of 9



SECTION A-A (SAW SLOT DETAIL)

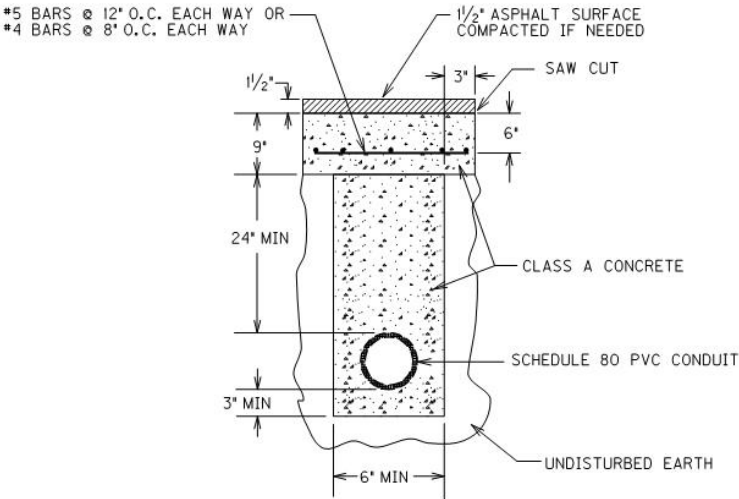


SAW SLOT EDGE OF PAVEMENT TRANSITION

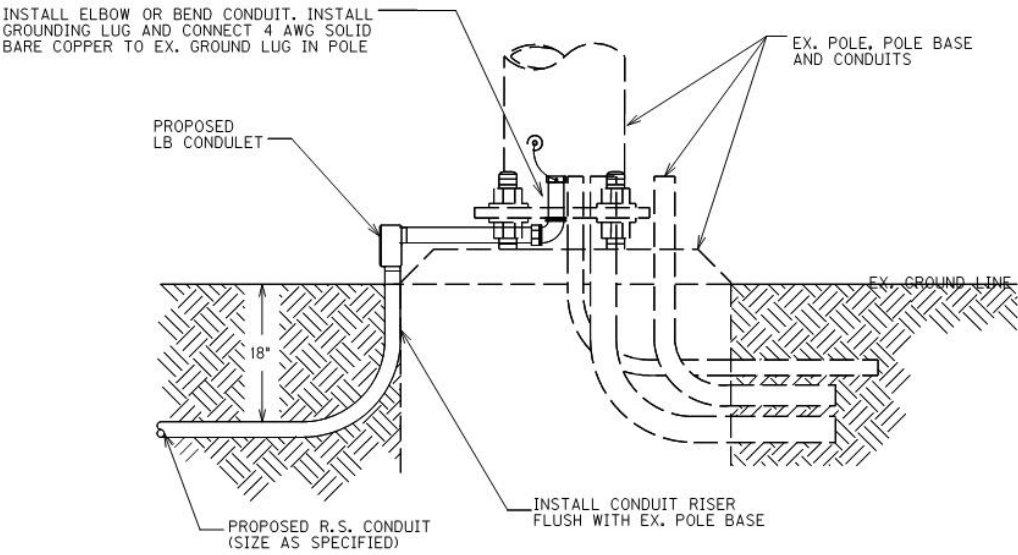


CONDUIT UNDER EXISTING PAVEMENT DETAIL

Traffic Signal Loop Detectors  
Page 8 of 9

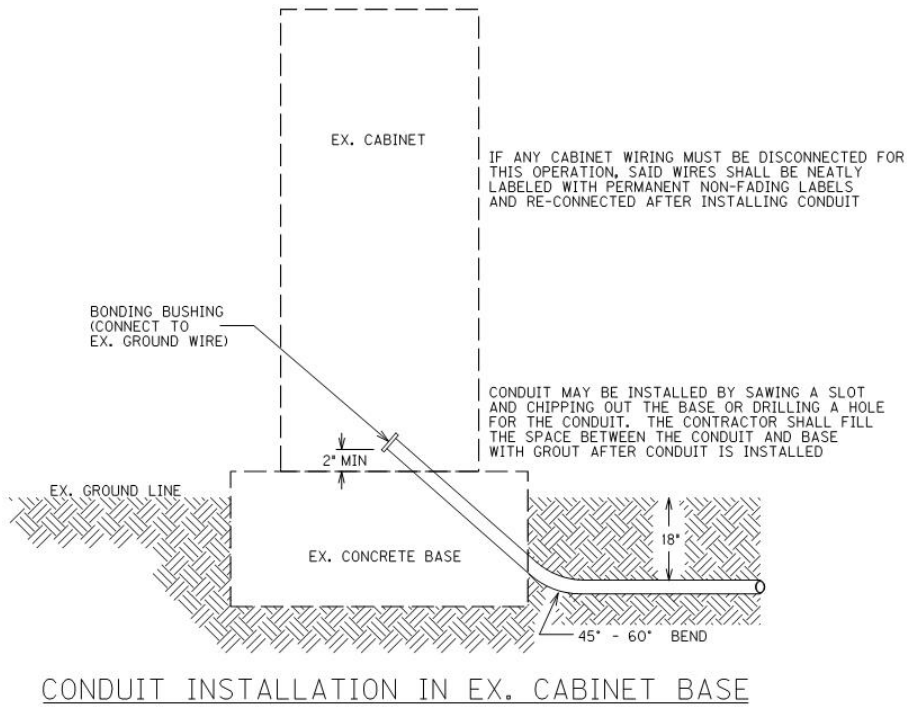


OPEN CUT PAVEMENT DETAIL



CONDUIT INSTALLATION IN EX. POLE BASE

Traffic Signal Loop Detectors  
Page 9 of 9



Update: 4-5-2022

**Milling  
Summary  
FD05 109 0070 000-004**

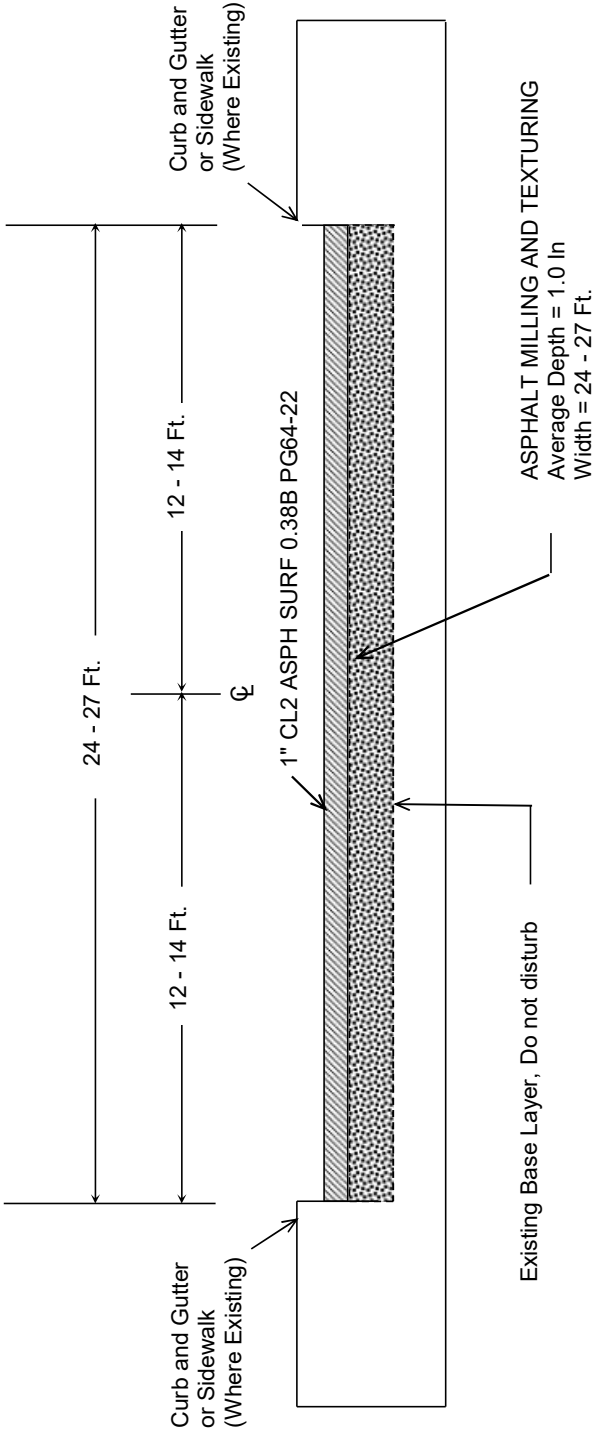
Total					785
Milepoint	Comment	Length	Width	Avg Depth	Tons
0.000	FULL MILL - CURB & GUTTER	1850	27	1	305.25
0.327	FULL MILL	1100	26	1	174.777778
0.514	FULL MILL - END @ HORD LN	1750	25	1	267.361111
	EDGE KEYS				
0.803	E HORD ST	40	4	0.5	0.48888889
0.815	W HORD ST	35	4	0.5	0.42777778
0.87	LINCOLN AVE	28	4	0.5	0.34222222
0.922	GUTPON CT	28	4	0.5	0.34222222
0.952	ROLAND ST	35	4	0.5	0.42777778
1.004	FORD ST	20	4	0.5	0.24444444
1.08	KY 372	65	4	0.5	0.79444444
1.225	WATSON CT	25	4	0.5	0.30555556
1.329	COUNTRY VIEW DR	75	4	0.5	0.91666667
1.367	COUNTRY VIEW CT	28	4	0.5	0.34222222
1.377	MEADOWFIELD DR	20	4	0.5	0.24444444
1.443	MEADOWVIEW CT	25	4	0.5	0.30555556
1.503	SHEILIA DR	45	4	0.5	0.55
1.653	HIGHLAND DR / HAPPY HILLS DR	150	4	0.5	1.83333333
1.817	SAW MILL DR	25	4	0.5	0.30555556
1.881	KY 3518	32	4	0.5	0.39111111
2.369	KELTNER RD	70	4	0.5	0.85555556
2.268	MAINLINE, NEW OVERLAY	100	24	0.5	7.33333333
2.657	MAINLINE, NEW OVERLAY	100	24	0.5	7.33333333
2.528	OLD ELKHORN RD	75	4	0.5	0.91666667
2.647	RUSTIC HAVEN DR	65	4	0.5	0.79444444
2.776	OLD ELKHORN RD	50	4	0.5	0.61111111
2.947	ROBERTS RD	25	4	0.5	0.30555556
3.444	AMBER DR	25	4	0.5	0.30555556
3.7	END OF PROJECT	100	22	0.5	6.72222222
					0

Contact Traffic Engineer before sawing any loops to make sure everything is communicated correctly. (270) 766-5066

INTERSECTION	DIRECTION	NUMBER OF QUADRAPOLE LOOPS	DISTANCE TO THE JUNCTION BOX	SAW, SLOT AND FILL LF	LOOP WIRE LF	CABLE NO. 14 LF	CONDUIT 1 1/4 INCH LF	TRENCH BACKFILL LF	JUNCTION TYPE B EA	CUT LOOP TO POLE, NO JUNCTION BOX.	NOTES
US 68 @ KY 70	NB	1	25	127	364	30	0	0	0		
TOTAL		1	25	127	364	30	0	0	0		

## NOTES:

Taylor County  
TYPICAL SECTION  
FD05 109 0070 000-004  
MP's 0.000 to 0.800



NOTES

- 1) Typical section applies where existing site conditions meet.
- 2) Pave/Mill all side road entrances to back of radius.
- 3) Extra 2' width of CL2 ASPH SURF 0.38B PG64-22 set up for large commercial entrances.
- 4) Match existing striping. Where Edgeline Stripe exists, stripe to 9.5 FT. lanes.
- 5) Consult Project Engineer about Chicken Tracks through intersections prior to striping operations.



252175

PROPOSAL BID ITEMS

Report Date 8/8/25

Page 1 of 1

252175

Section: 0001 - PAVING

LINE	BID CODE	ALT	DESCRIPTION	QUANTITY	UNIT	UNIT PRIC	FP	AMOUNT
0010	00190		LEVELING & WEDGING PG64-22	293.00	TON		\$	
0020	00263		ASPHALT MIX FOR PAVEMENT WEDGE	450.00	TON		\$	
0030	00307		CL2 ASPH SURF 0.38B PG64-22 (REVISED 8-8-25)	2,855.00	TON		\$	
0040	02562		TEMPORARY SIGNS	930.00	SQFT		\$	
0050	02650		MAINTAIN & CONTROL TRAFFIC	1.00	LS		\$	
0060	02671		PORTABLE CHANGEABLE MESSAGE SIGN	2.00	EACH		\$	
0070	02676		MOBILIZATION FOR MILL & TEXT	1.00	LS		\$	
0080	02677		ASPHALT PAVE MILLING & TEXTURING	980.00	TON		\$	
0090	02697		EDGE LINE RUMBLE STRIPS	8,585.00	LF		\$	
0100	02720		SIDEWALK-4 IN CONCRETE	45.00	SQYD		\$	
0102	04895		LOOP SAW SLOT AND FILL (ADDED 8-8-25)	127.00	LF		\$	
0104	04830		LOOP WIRE (ADDED 8-8-25)	364.00	LF		\$	
0106	04850		CABLE-NO. 14/1 PAIR (ADDED 8-8-25)	30.00	LF		\$	
0110	06510		PAVE STRIPING-TEMP PAINT-4 IN	20,000.00	LF		\$	
0120	06515		PAVE STRIPING-PERM PAINT-6 IN	80,000.00	LF		\$	
0130	06565		PAVE MARKING-THERMO X-WALK-6 IN	260.00	LF		\$	
0140	06568		PAVE MARKING-THERMO STOP BAR-24IN	189.00	LF		\$	
0150	06569		PAVE MARKING-THERMO CROSS-HATCH	216.00	SQFT		\$	
0160	10020NS		FUEL ADJUSTMENT	5,593.00	DOLL	\$1.00	\$	\$5,593.00
0170	10030NS		ASPHALT ADJUSTMENT	14,047.00	DOLL	\$1.00	\$	\$14,047.00
0180	23158ES505		DETECTABLE WARNINGS (NEW)	56.00	SQFT		\$	
0190	23158ES505		DETECTABLE WARNINGS (RETROFIT)	80.00	SQFT		\$	
0200	24970EC		ASPHALT MATERIAL FOR TACK NON- TRACKING	23.00	TON		\$	

Section: 0002 - DEMOBILIZATION

LINE	BID CODE	ALT	DESCRIPTION	QUANTITY	UNIT	UNIT PRIC	FP	AMOUNT
0210	02569		DEMOBILIZATION	1.00	LS		\$	